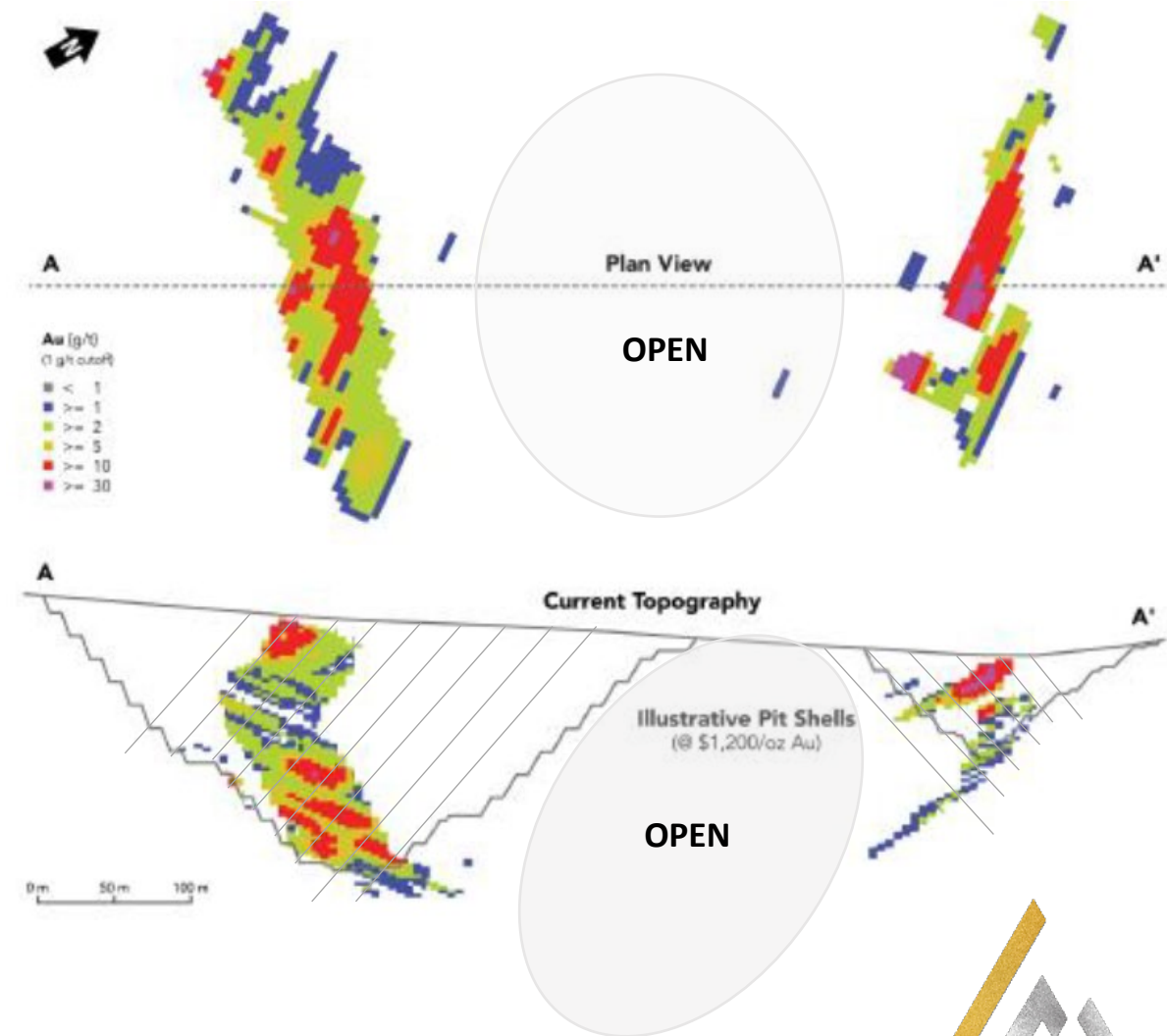


# PEAK GOLD JV EXPLORATION UPSIDE

## PROJECT HIGHLIGHTS

- Peak Gold JV has commenced a \$3.6 million infill, geotechnical and metallurgical drilling program to advance feasibility and permitting studies.
- Initial permitting activities are expected to commence in parallel with the drilling program.
- Peak Gold JV expects to complete permitting and a feasibility study by the end of 2022. Project construction is expected to take approximately one year, with production planned to commence in 2024.
- Kinross has completed substantial due diligence at the project, conducting site visits in 2019. The Company has also held productive meetings with leaders of the Tetlin Tribe, who have indicated their support for the project development plan.
- The Peak Gold JV also plans to rename the project in consultation with the Tetlin Tribe and looks forward to a productive and mutually beneficial partnership with the community.



# PEAK GOLD AND SURROUNDING TARGETS



- All land in this view is part of Tetlin Village lease lands
- Highest elevation in the area is VABM Tetlin, just north of Discovery prospect, at 3345 feet ASL (1,019.5m)
- Main/North Peak deposits sit at 3250 feet ASL, right at regional tree-line
- Deeply dissected rolling hills have undergone extensive period of weathering, average oxidation depth of 50-75m below surface
- No Pleistocene glaciation, periglacial setting resulted in deposition of 1-+10m of aeolian silt over weathered bedrock
- Sub-Arctic vegetation has been affected by multiple wildfires from 1990 through 2015, only unburned areas are on SW side of Mohawk prospect

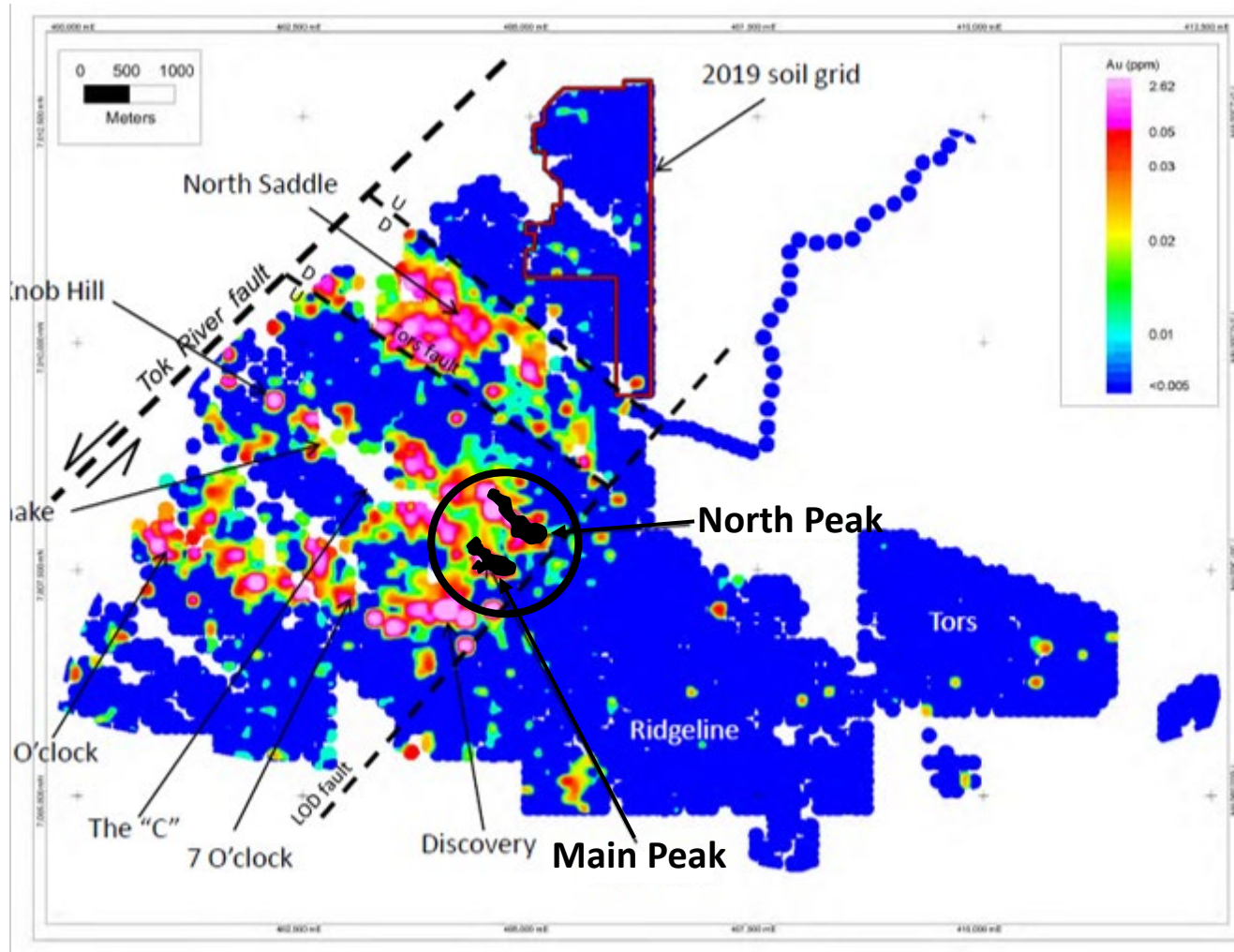


3



# PEAK GOLD AND SURROUNDING TARGETS

## Chief Danny Area: Gold in Soils (thru 2019)



- Gold in soils at Main and North Peak display clear northwest-trending patterns that mimic current resources
- The trend from Discovery to 8 O'clock is either arcuate or created by numerous D3-age NE-trending faults with apparent left lateral offset
- The North Saddle gold anomaly appears to be located in a graben bounded by the Tors fault on the south and another subparallel D2-age northwest trending fault to the north
- The southeastern limits of all of the gold in soil trends is abruptly cut off by the D3-age northeast trending Line of Death (LOD) fault.
- Motion on LOD fault is uncertain but likely some left lateral motion and possibly down on SE side of LOD



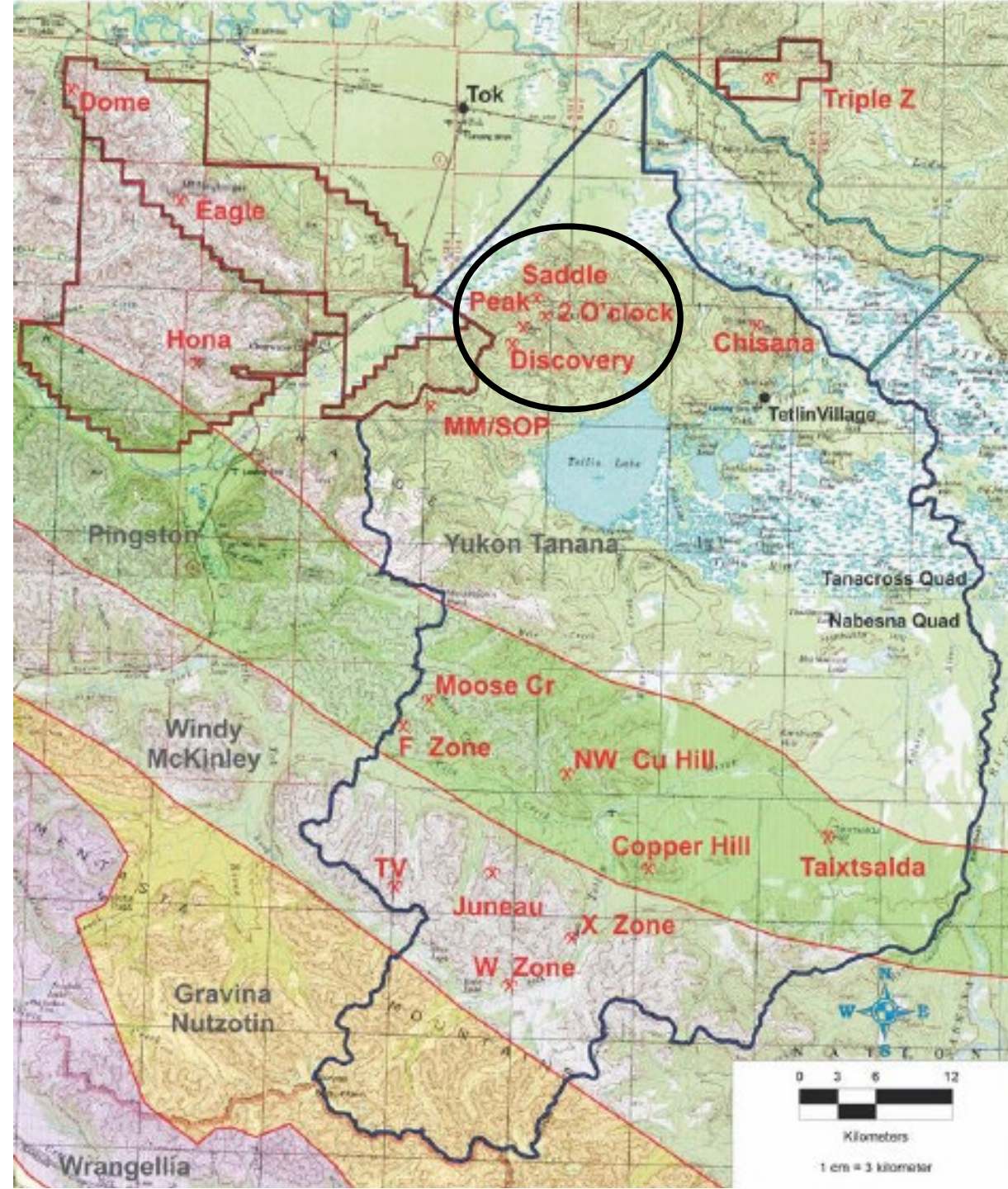
# EXPLORATION UPSIDE

## PEAK GOLD JV LANDS

- 675,000 Acres of Exploration Lands with multiple targets
- Peak Gold's exploration on the Tetlin Lands has been limited except for the areas around the identified deposits where there is an extensive database.
- Specifically, there has only been minor exploration on the southern 2/3rds of the Tetlin Lands, which remain largely unexplored.

## 100% OWNED CONTANGO ORE LANDS

- 170,000 Acres of Exploration Lands<sup>1</sup> with multiple targets and extensive database
- Three drill-ready Gold targets identified at Hona/Eagle/Dome
- Porphyry Copper-Gold target at Triple Z
- Follow up on multiple targets including 9 Gram Creek



<sup>1</sup> Approximately 13,000 acres of the state mining claims are subject to a repurchase option by the Joint Venture Company.